

ON STAGE

# A view from above

Rademeyer's exquisite talent on show, writes Eugene Yiga

THE ninth annual spring drama season kicked off at Cape Town's Artscape Theatre last week. The first of four productions to be staged over the next few months is *The View*.

It tells the story of "Boy", a young man incarcerated in space, looking down at a ruined Earth and reflecting on the circumstances that brought him there. As a final request, he receives a videotape of interviews with various people from his life.

Gideon Lombard's moving performance is especially powerful in the production's emotional close. Ella Gabriel shows an uncanny ability to accurately portray 12 characters across gender, age and race.

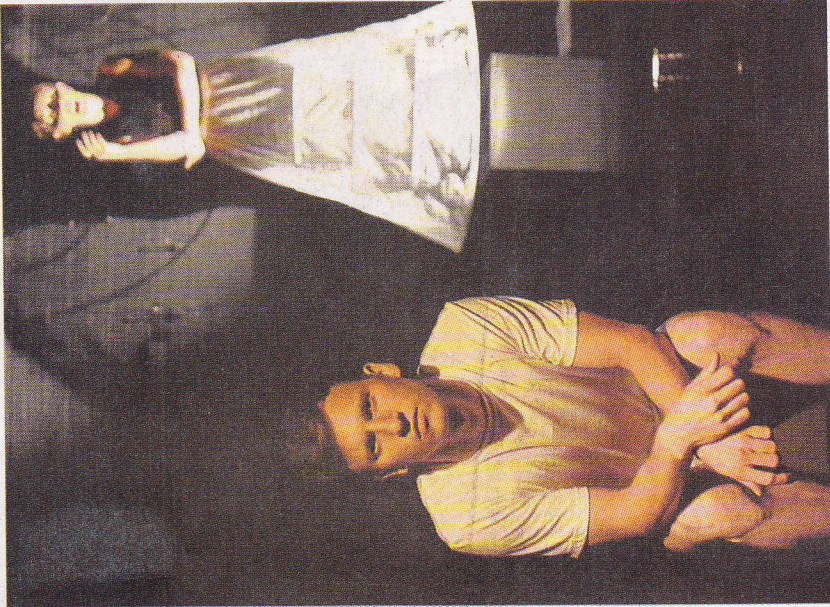
*The View* won the Oscar Wilde Award for Best New Writing and the Doric Wilson Intercultural Dialogue Award at the International Dublin Gay

Theatre Festival in May this year. Lombard and Gabriel also received nominations for Best Male Performance and Best Female Performance respectively.

Scriptwriter Philip Rademeyer has crafted a poetic piece. Like other works from Rust Cooperative, the production company he set up with writer and designer Penelope Youngleson last year, *The View* isn't afraid to explore contemporary issues that some might find uncomfortable.

In the end, it poses tough questions and is (at times deliberately and frustratingly) vague in answering them. But when seen as an allegory about the bleak state of humanity and the hope of better days to come, it's one to watch.

● *The View* (PG-13) at Cape Town's Artscape Theatre until November 9. Book at Computicket



NO ANSWERS: Gideon Lombard and Ella Gabriel in 'The View'

ON YOUR PLAYLIST

Being a brand better than Brand

KATY PERRY: PRISM

FROM the first verse on Katy Perry's *Roar*, the mega hit single and opening track on her new album, the listener knows what they are in for: catchy tunes with positive and cliché-ridden lyrics.

Perry's third album, *Prism*, follows her very public divorce from comedian Russell Brand (he dumped her via text), and the lyrics are more about self-discovery than self-pity. Perry is determined to move on, but not without a little help from lyrics about third eyes and karma. If *Eat, Pray, Love* was an album, this would be it.

Perry sticks largely to her

formula of high-energy, infectious songs, and the tracks are riddled with sexual innuendos. There are some catchy, punchy, power pop love songs (Perry's new man is John Mayer) about heaven and soulmates, and even a collaboration with rapper Juicy J (*Dark Horse*) that is sure to inspire some twerking.

Once again, Perry has made an album that will surely produce more No 1 hits. Take that, Russell Brand. — Pearl Boshomane



Pieter Toerien's  
Montecasino Theatre & Studio  
www.montecasinotheatre.co.za  
Box Office: (011) 511-1818  
LAST 2 WEEKS!  
"A must-see for all!" ArsiLink.co.za  
**PIETER-DIRKLOYS ADAPTORIALLY**  
WED-FRI @ 8PM,  
SAT @ 5PM & 8PM, SUN @ 8PM  
**MICHAEL RICHARD** in  
MY MOTHER'S  
**ITALIAN JEWISH & THERAPY!**  
STARTS Wed 6 NOV!

auto general  
**THEATRE ON THE SQUARE**  
DOUBLE BILL TONIGHT at 7pm  
MEZE: TUE at 8:15pm  
SOIL: WED at 8:15pm  
BOTH SHOWS: THU, FRI & SAT at 7pm  
BOOK FOR THE DOUBLE BILL ON FR & SAT NIGHTS WITH DELICIOUS GREEK MEZE BETWEEN SHOWS!  
TELEPHONE 011 883 8606 OR 082 553 5901/3  
online: www.strictlytickets.com No booking fees!

Daphne Kuhn presents a unique **DOUBLE BILL**  
**TRENE STEPHANOU'S CLASSIC GREEK/SA COMEDY**  
**MEZE, MIRA AND MAKEUP**  
DIRECTED BY RENOS NICOS SPANOUDIS  
INTRODUCING TATINI PAPADOPOULOS LOUGH  
**RENOS NICOS SPANOUDIS' NEW PLAY, SOIL**  
DIRECTED BY LYNNIE MARÉE WITH  
ASHLEY DOWDS AND BRENDA CADLOFF SANELLARIDES